

THIS DRAWING IS UNPUBLISHED. RELEASED FOR PUBLICATION
 © COPYRIGHT - By - ALL RIGHTS RESERVED.

| LOC | | DIST | | REVISIONS | | | |
|-----|----|------|-----|---------------------------|-----------|-----|------|
| AD | 00 | P | LTR | DESCRIPTION | DATE | DWN | APVD |
| | | C4 | | REVISED PER ECO-15-015778 | 05NOV2015 | NK | RH |

SPECIFICATIONS:

MATERIALS:
 BASE: PPS UL94V-0
 COVER: PPS UL94V-0
 ACTUATOR: LCP UL94V-0
 MOVING CONTACT: COPPER ALLOY, GOLD OVER NICKEL PLATE
 FIXED CONTACT/TERMINAL: COPPER ALLOY, GOLD OVER NICKEL PLATE

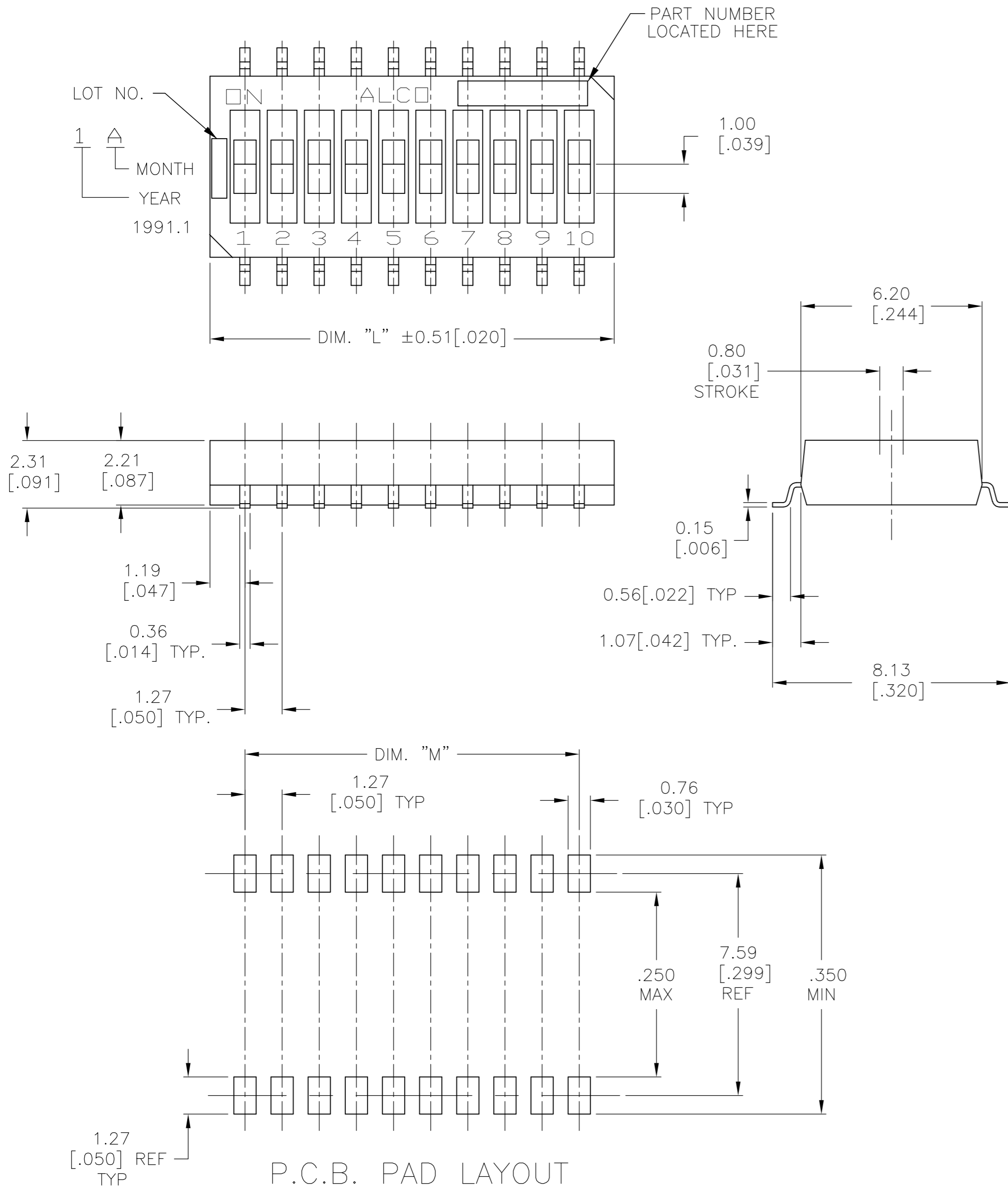
ELECTRICAL:
 CONTACT RATING: NON-SWITCHING 100mA @ 50 VDC
 SWITCHING: 25mA @ 24 VDC.
 INITIAL CONTACT RESISTANCE: 100mΩ MAX. @ 2 VDC, 10 mA.
 INSULATION RESISTANCE: 100 MEGOHMS MIN. @ 100 VDC.
 DIELECTRIC STRENGTH: 300 VAC. 1 MINUTE.
 LIFE: 1,000 CYCLES.

MECHANICAL:
 OPERATING FORCE: 600G MAX.

ENVIRONMENTAL:
 OPERATING TEMPERATURE: -22°F TO +185°F (-30°C TO +85°C).
 STORAGE TEMPERATURE: -49°F TO +212°F (-45°C TO +100°C).
 SOLDER HEAT RESISTANCE PER 109-201, CONDITION B
 SOLDERABILITY PER JIS C 0050 & JIS C 0053

- ① PARTS WITH 'ON' SUFFIX SUPPLIED IN THE ON POSITION.
- ② SUPPLIED WITH TAPE SEAL STANDARD.
- ③ FOR TAPE AND REEL PACKAGING- PART NO. GDHXXSTR SEE MODEL NUMBER CHART BELOW.
- ④ FOR NO SEAL OPTION = NS.
- ⑤ ALL MATERIALS AND FINISHES SHALL COMPLY WITH EU DIRECTIVE 2002/95/EC OF 27 JAN 2003 (ROHS)
- ⑥ OBSOLETE PARTS: OBSOLETE CIS STREAMLINING PER D.RENAUD/D.SINISI

| | | | | | | |
|----|-------------|-------------|------|------|---------------|----------------------|
| | 11.43[.450] | 13.82[.544] | 10 | NONE | GDH010STRNS04 | 1-1571983-6 |
| ① | 1.27[.050] | 3.66[.144] | 2 | TAPE | GDH02STRON04 | 1-1571983-5 |
| | 11.43[.450] | 13.82[.544] | 10 | TAPE | GDH010STR04 | 1-1571983-4 |
| | 11.43[.450] | 13.82[.544] | 10 | TAPE | GDH010S04 | 1-1571983-3 |
| ④ | 8.89[.350] | 11.28[.444] | 8 | NONE | GDH08STRNS04 | 1-1571983-2 |
| | 8.89[.350] | 11.28[.444] | 8 | TAPE | GDH08STR04 | 1-1571983-1 |
| | 8.89[.350] | 11.28[.444] | 8 | TAPE | GDH08S04 | 1-1571983-0 |
| | 6.35[.250] | 8.74[.344] | 6 | TAPE | GDH06STR04 | 1571983-9 |
| | 6.35[.250] | 8.74[.344] | 6 | TAPE | GDH06S04 | 1571983-8 |
| ① | 3.81[.150] | 6.20[.244] | 4 | TAPE | GDH04STRON04 | 1571983-7 |
| ④ | 3.81[.150] | 6.20[.244] | 4 | NONE | GDH04STRNS04 | 1571983-6 |
| | 3.81[.150] | 6.20[.244] | 4 | TAPE | GDH04STR04 | 1571983-5 |
| | 3.81[.150] | 6.20[.244] | 4 | TAPE | GDH04S04 | 1571983-4 |
| | 1.27[.050] | 3.66[.144] | 2 | TAPE | GDH02STR04 | 1571983-3 |
| ①⑥ | 1.27[.050] | 3.66[.144] | 2 | TAPE | GDH02SON04 | 1571983-2 |
| | 1.27[.050] | 3.66[.144] | 2 | TAPE | GDH02S04 | 1571983-1 |
| | M | L | POLE | SEAL | OLD T&B P/N | PART NUMBER |



P.C.B. PAD LAYOUT
 PCB LAYOUT TOLERANCES ±.002
 ON ALL DIMENSIONS

THIS DRAWING IS A CONTROLLED DOCUMENT.

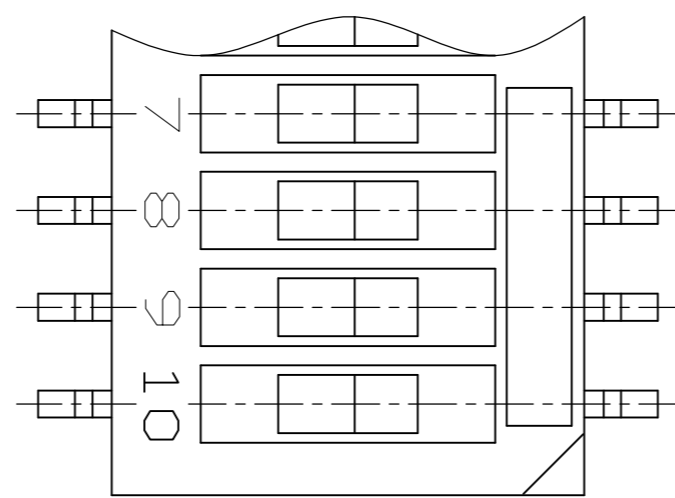
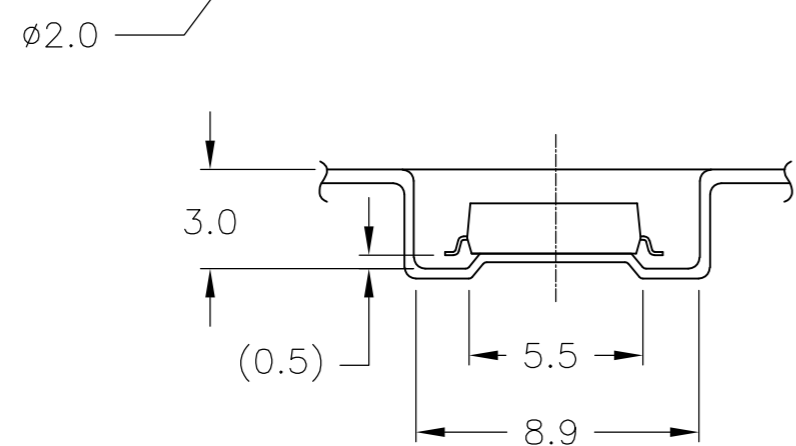
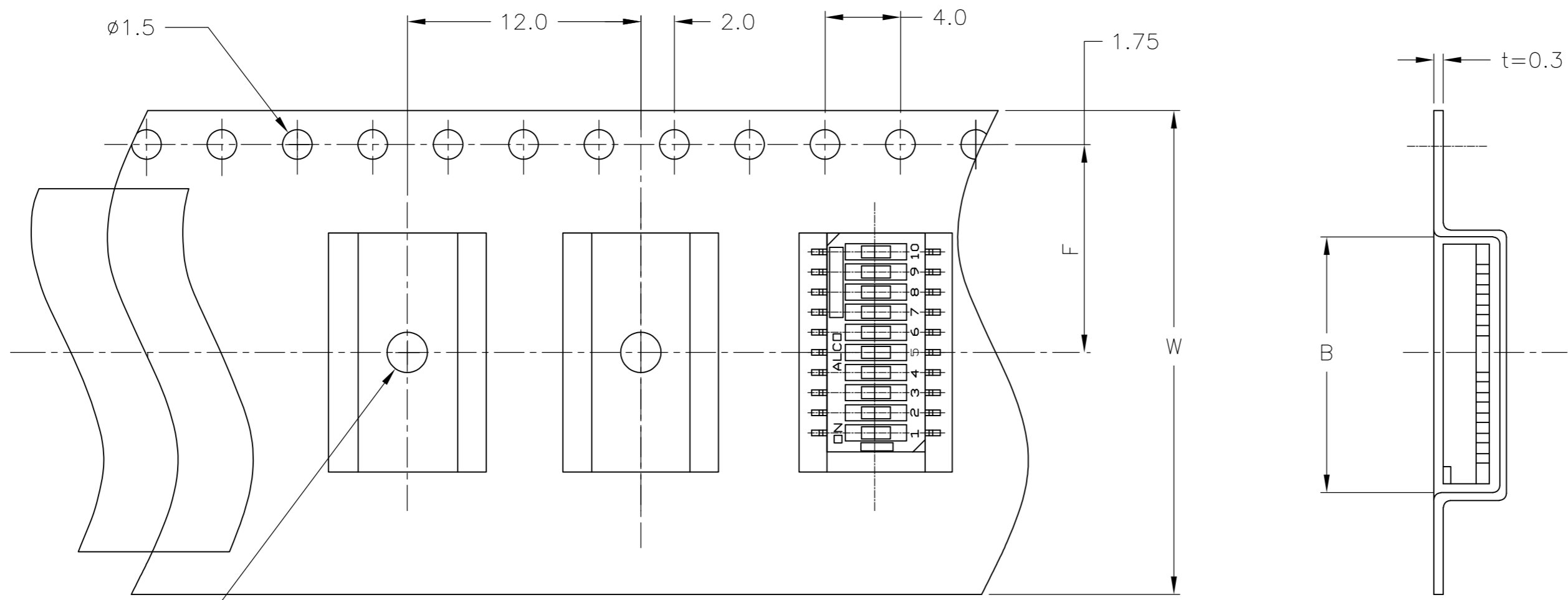
| | | | | | | | |
|----------------------------|--|--------|--------|--------|-------|--------|-----|
| DIMENSIONS: mm [INCHES] | TOLERANCES UNLESS OTHERWISE SPECIFIED: 0 PLC ± - 1 PLC ± - 2 PLC ± 0.25 [.010] 3 PLC ± - 4 PLC ± - ANGLES ± 1° | FINISH | FINISH | WEIGHT | SCALE | SHEET | REV |
| | | | | | A2 | 1 of 2 | C4 |

TE Connectivity
 DIP SWITCH
 GDH SERIES

SIZE: A2 CAGE CODE: 00779 DRAWING NO: 1571983 RESTRICTED TO: -
 CUSTOMER DRAWING SCALE: 8:1 SHEET: 1 of 2 REV: C4

THIS DRAWING IS UNPUBLISHED. RELEASED FOR PUBLICATION
 © COPYRIGHT - By - ALL RIGHTS RESERVED.

| LOC | | DIST | | REVISIONS | | | |
|-----|-----|-------------|------|-----------|------|--|--|
| P | LTR | DESCRIPTION | DATE | DWN | APVD | | |
| AD | 00 | SEE TABLE 1 | - | - | - | | |



→ DIRECTION OF FEED

| NO. OF POS. | DIMENSION | | |
|-------------|-----------|------|------|
| | W | F | B |
| 2P | | | 4.45 |
| 4P | 16.0 | 7.5 | 7.0 |
| 6P | | | 9.55 |
| 8P | | | 12.1 |
| 10P | 24.0 | 11.5 | 14.6 |

| | | | | | | | | | | | | | |
|--|--|--------|----------|-----------------------|---|-------|-----|-----------|--------|------------|-----------|---------------|---|
| THIS DRAWING IS A CONTROLLED DOCUMENT. | | DWN | R BROWN | 15MAR05 | | | | | | | | | |
| DIMENSIONS: mm [INCHES] | | CHK | M SARVER | 15MAR05 | | | | | | | | | |
| TOLERANCES UNLESS OTHERWISE SPECIFIED: | | APVD | M SARVER | 15MAR05 | | | | | | | | | |
| 0 PLC ± - 1 PLC ± - 2 PLC ± 0.25 [.010] 3 PLC ± - 4 PLC ± - ANGLES ± 1° | | NAME | | DIP SWITCH GDH SERIES | | | | | | | | | |
| MATERIAL | | FINISH | | WEIGHT | - | SIZE | A2 | CAGE CODE | 00779 | DRAWING NO | C=1571983 | RESTRICTED TO | - |
| - | | - | | CUSTOMER DRAWING | | SCALE | 3:1 | SHEET | 2 OF 2 | REV | C4 | | |